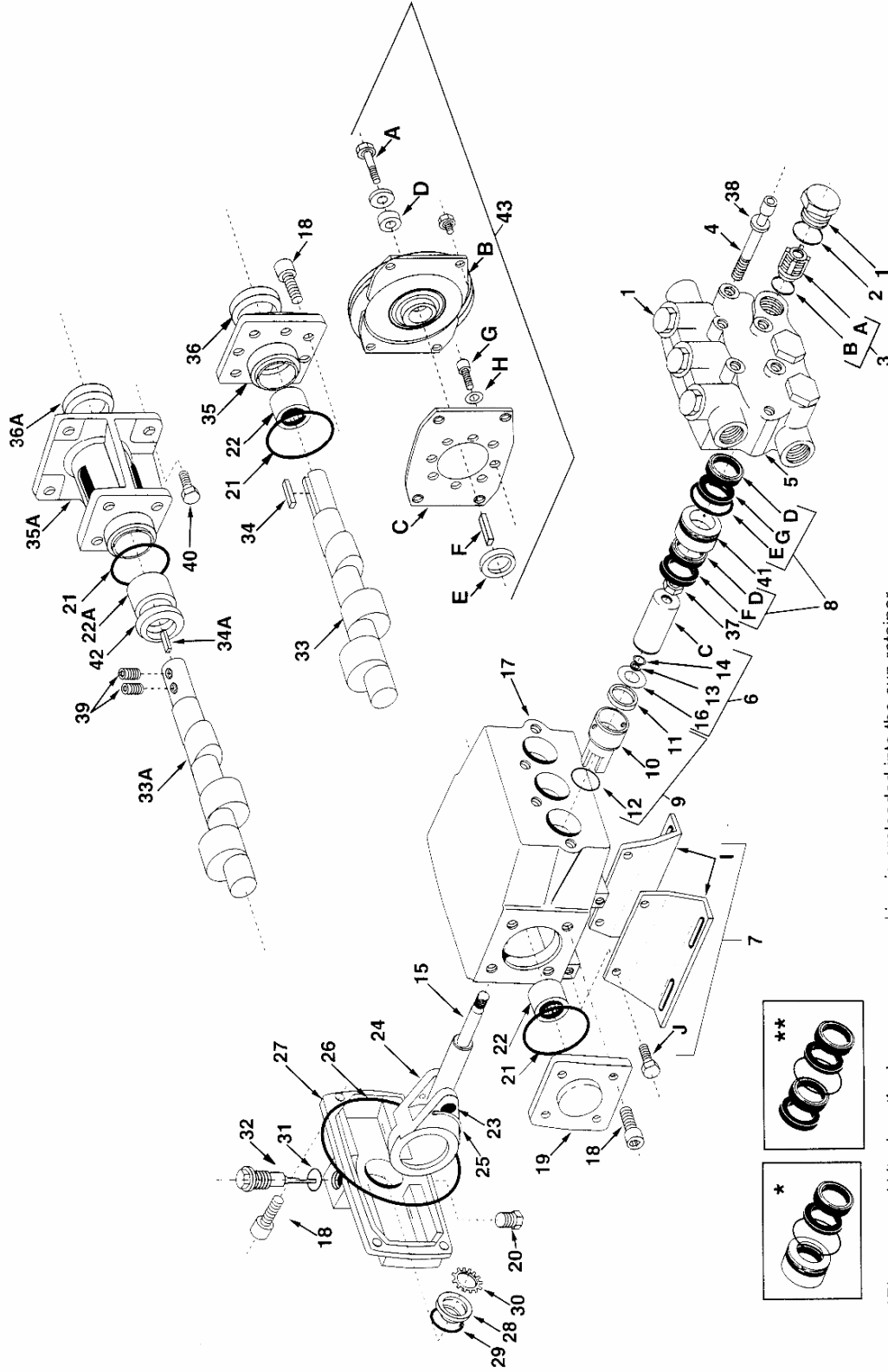


Models 2330B-P, 2331B-CP, 2340B-P, 2345B-P, 2350B-P, 2351B-P and 2354B-CP



*Plunger seal kit when the low pressure packing is preloaded into the cup retainer.

** Plunger seal kit when the low pressure packing is *not* preloaded into the cup retainer.

PowerLine Plus Parts List

Models 2330B-P, 2331B-CP, 2340B-P, 2345B-P, 2350B-P, 2351B-P and 2354B-CP

| Ref. No. | Qty. Req'd. | Part Number | Description |
|----------|-------------|-------------|---|
| 1 | 6 | 2404-0300 | Valve cap (bronze) |
| 1 | 1 | 2404-0166 | Valve cap w/1/4" NPT port (optional) |
| 2 | 6 | 1720-0205 | O-ring |
| 3 | 1 Set | 3430-0491 | Valve kit-std. (stainless steel) Consists of: 6 valve assemblies (Ref. A), 6 o-rings (Ref. B) |
| 4 | 6 | 2220-0051 | Socket head capscrew |
| 5 | 1 | 0201-2300B | Head (bronze) |
| 6 | 3 Sets | 3430-0514 | Plunger kit (Models 2330B-P, 2340B-P and 2345B-P) Consists of: 1 o-ring, 1 plunger (Ref. C), 1 backup seal, 1 slinger ring |
| 6 | 3 Sets | 3430-0513 | Plunger kit (Models 2350B-P and 2351B-P) Consists of: 1 o-ring, 1 plunger (Ref. C), 1 backup seal, 1 slinger ring |
| 7 | 1 Set | 3430-0269 | Base kit Consists of: 2 bases (Ref. I), 4 hex head capscrews (Ref. J) |
| 8 | 1 Set | 3430-0493 | Plunger seal kit (Buna-N, standard) (Models 2330B-P, 2340B-P, and 2345B-P) Consists of: 6 U-cups (Ref. D), 3 o-rings (Ref. E), 3 seal rings (Ref. F), 3 backup rings (Ref. G) |
| 8 | 1 Set | 3430-0492 | Plunger seal kit (Buna-N, standard) (Models 2350B-P and 2351B-P) Consists of: 6 U-cups (Ref. D), 3 o-rings (Ref. E), 3 seal rings (Ref. F), 3 backup rings (Ref. G) |
| 8 | 1 Set | 3430-0502 | Plunger seal kit (Viton) (Models 2330B-P, 2340B-P, and 2345B-P) Consists of: 6 U-cups (Ref. D), 3 o-rings (Ref. E), 3 seal rings (Ref. F), 3 backup rings (Ref. G) |
| 8 | 1 Set | 3430-0503 | Plunger seal kit (Viton) (Models 2350B-P and 2351B-P) Consists of: 6 U-cups (Ref. D), 3 o-rings (Ref. E), 3 seal rings (Ref. F), 3 backup rings (Ref. G) |
| 8 | 1 Set | 3430-0523* | Plunger seal kit, loaded (Buna-N, standard) (Models 2330B-P, 2340B-P, 2345B-P) Consists of: 6 U-cups (Ref. D), 3 o-rings (Ref. E), 3 seal rings (Ref. F), 3 backup rings (Ref. G), and 3 cup retainers (Ref. 41) |
| 8 | 1 Set | 3430-0522* | Plunger seal kit, loaded (Buna-N, standard) (Models 2350B-P and 2351B-P) Consists of: 6 U-cups (Ref. D), 3 o-rings (Ref. E), 3 seal rings (Ref. F), 3 backup rings (Ref. G), and 3 cup retainers (Ref. 41) |
| 8 | 1 Set | 3430-0519* | Plunger seal kit, loaded (Viton) (Models 2330B-P, 2340B-P, 2345B-P) Consists of: 6 U-cups (Ref. D), 3 o-rings (Ref. E), 3 seal rings (Ref. F), 3 backup rings (Ref. G), and 3 cup retainers (Ref. 41) |

| Ref. No. | Qty. Req'd. | Part Number | Description |
|----------|-------------|-------------|---|
| 8 | 1 Set | 3430-0520* | Plunger seal kit, loaded (Viton) (Models 2350B-P and 2351B-P) Consists of: 6 U-cups (Ref. D), 3 o-rings (Ref. E), 3 seal rings (Ref. F), 3 backup rings (Ref. G), and 3 cup retainers (Ref. 41) |
| 9 | 1 set | 3430-0499 | Oil seal repair kit Consists of: 3 inserts (Ref. 10), 3 oil seals, (Ref. 11) and 3 o-rings (Ref. 12) |
| 10 | 3 | 0713-2300A | Insert |
| 11 | 3 | 2102-0038 | Oil seal |
| 12 | 3 | 1720-0206 | O-ring |
| 13 | 3 | 1760-0005 | Backup seal |
| 14 | 3 | 1720-0033 | O-ring |
| 15 | 3 | 3500-0068 | Plunger rod |
| 16 | 3 | 2270-0058 | Slinger ring |
| 17 | 1 | 0102-2300A | Crankcase |
| 18 | 12 | 2220-0041 | Socket head capscrew |
| 19 | 1 | 0704-2200A | End plate |
| 20 | 1 | 2406-0019 | Drain plug |
| 21 | 2 | 1720-0131 | O-ring |
| 22 | 2 | 2007-0059 | Needle bearing (solid shaft) |
| 22A | 1 | 2007-0051 | Needle bearing (3/4" hollow shaft) |
| 23 | 3 | 2404-0299 | Wrist pin |
| 24 | 3 | 0501-8600A | Connecting rod |
| 25 | 3 | 3270-0065 | Spring retainer |
| 26 | 1 | 1720-0203 | O-ring |
| 27 | 1 | 0707-2300A | Cover |
| 28 | 1 | 2630-0018 | Sight glass |
| 29 | 1 | 1720-0202 | O-ring |
| 30 | 1 | 1800-0016 | Retainer |
| 31 | 1 | 1720-0209 | O-ring |
| 32 | 1 | 2630-0008 | Dipstick |
| 32 | 1 | 2404-0188 | Shipping plug |
| 33 | 1 | 0502-8730F | Crankshaft (Model 2330B-P) |
| 33 | 1 | 0502-8740F | Crankshaft (Models 2340B-P and 2350B-P) |
| 33 | 1 | 0503-8745F | Crankshaft (Model 2345B-P and 2351B-P) |
| 33A | 1 | 0551-8731F | Crankshaft (Model 2331B-CP and 2354B-CP) |
| 34 | 1 | 1610-0007 | Key (solid shaft) |
| 34A | 1 | 1610-0011 | Key (hollow shaft) |
| 35 | 1 | 0702-2200A | End Cover |
| 35A | 1 | 0712-2200A | End cover for gas engine |
| 36 | 1 | 2102-0014 | Shaft Seal (solid shaft) |
| 36A | 1 | 2102-0022 | Shaft seal (hollow shaft) |
| 37 | 3 | 2250-0051 | Retaining Nut |
| 38 | 6 | 2270-0079 | Lock Washer |
| 39 | 2 | 2230-0017 | Set screw |
| 40 | 4 | 2210-0081 | Bolt |
| 41 | 3 | 1830-0162 | Cup Retainer (Models 2350B-P, 2351B-P, 2354B-CP) |
| 41 | 3 | 1830-0163 | Cup Retainer (Models 2330B-P, 2331B-CP, 2340B-P, and 2345B-P) |
| 42 | 1 | 2265-0010 | Thrust washer (-C only) |
| 43 | 1 | 8000-0042 | Clutch Kit (Model 2359B-PY) Consists of: 1 clutch assembly (Ref. B), 1 bracket (Ref. C), 1 small spacer (Ref. D), 1 large spacer (Ref. E), 1 key (Ref. F), 4 socket head cap screws (Ref. G) and 4 washers (Ref. H). |

* Plunger seal kit with low pressure packing preloaded into the cup retainer.